



Audra, prenatally diagnosed at 13 weeks with a sacrococcygeal teratoma. Pregnancy care, delivery and postnatal surgery were all coordinated through the Fetal Care Center.

WOMEN & INFANTS CENTER

| The Fetal Care Center

One Medical Campus for Comprehensive Maternal, Fetal and Pediatric Care

We keep families together throughout their journey. From a first diagnostic test through postnatal care, mom and baby will conveniently receive care and services from a multidisciplinary team of experts all located on one medical campus.



Twins, Caden and Cooper, underwent in utero laser surgery for TTTS



The region's only center for in utero surgery

Our experienced team of fetal and pediatric surgeons offer hope for mom and baby before birth through open fetal surgery and fetoscopic-based interventions.

- Open fetal myelomeningocele repair for spina bifida
- Fetoscopic treatment for:
 - Twin-to-twin transfusion syndrome (TTTS)
 - Twin reversed arterial perfusion (TRAP)
 - Selective intrauterine growth restriction (sIUGR)
- Ex-utero intrapartum treatment (EXIT)
- Fetal blood sampling
- Thoracoamniotic shunting
- Intrauterine transfusions

We care for the most complex cases and diagnoses

No other center in the region matches our depth of specialty expertise and resources for expectant moms and baby. We are also one of the few medical centers in the country that can provide the level of care needed for complex fetal conditions. Services include:

- Advanced ultrasound and diagnostic testing
- Fetal echocardiography
- Genetic testing and counseling
- Open fetal surgery and fetoscopic-based fetal interventions
- Maternal-Fetal medicine
- Antepartum care, including high-risk obstetrics
- Maternal-Fetal transport, from referring hospital to Barnes-Jewish Hospital
- Labor and delivery
- Level IV newborn intensive care unit (NICU)
- Cardiac intensive care unit (CICU)
- Extracorporeal membrane oxygenation (ECMO)
- Pediatric specialists in all subspecialties
- Palliative care
- Follow-up care, in multidisciplinary specialty clinics:
 - Newborn medicine
 - Neurodevelopmental (neurology)
 - Cardiac neurodevelopmental
 - Pediatric surgery
 - Cleft palate and craniofacial institute
 - Nephrology / Urology
 - Congenital diaphragmatic hernia (CDH)
 - Spina bifida (myelomeningocele)

Visit fetalcare.org/conditions for a complete list of conditions we commonly evaluate and treat.



Highest level of expert newborn care and pediatric subspecialties

Newborns are cared for in St. Louis Children's Hospital's Level IV NICU, ranked nationally by U.S. News & World Report, and have access to follow-up care from pediatric specialists in all subspecialties.

Families stay together

Our birthing suite and operating rooms at Barnes-Jewish Hospital are directly connected to a Level IV newborn intensive care unit (NICU) at St. Louis Children's Hospital. Parents can easily see and be with their newborn while they recover from delivery.

Personalized & coordinated care

All Fetal Care Center patients receive a comprehensive, personalized plan of care for both mother and baby. Each family has a team to support and care for them, including a nurse coordinator who will be with them from day one and throughout their experience.



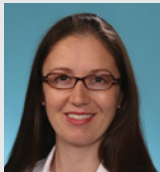
Meet the Team



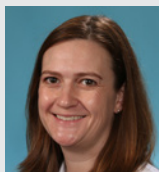
Anthony Odibo, MD
Interim Director, Fetal
Care Center
Maternal-Fetal
Medicine Specialist



Jagruti Anadkat, MD
Co-Director, Fetal
Care Center
Neonatologist



Jesse Vrecenak, MD
Pediatric and Fetal
Surgeon



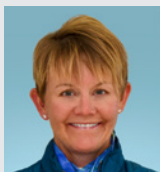
Lindsay Peglar, MD
Pediatric Neurologist



Caroline Lee, MD
Pediatric and Fetal
Cardiologist



Jennifer Strahle, MD
Pediatric
Neurosurgeon



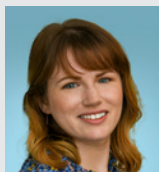
**Sarah Smith, RN,
BSN, CLC**
Nurse Coordinator,
Fetal Care Center



**Kym Galbraith, RN,
BSN**
Nurse Coordinator,
Fetal Heart Center



**Sarah Denson, RN,
BSN**
Nurse Coordinator,
Fetal Care Center



Stephanie Clubb
Social Worker,
Fetal Care Center

Call us with your referrals,
consult requests, emergency
transfer needs, or questions.

314.747.6539



*Jackson, underwent open fetal myelomeningocele repair
for spina bifida at 25-weeks in utero*

Location

The Fetal Care Center is a collaboration between Barnes-Jewish Hospital, St. Louis Children's Hospital and Washington University Physicians and is located on the Washington University Medical Campus in St. Louis, Missouri.

Center for Outpatient Health

4901 Forest Park Ave.
Floor 7, Suite 730
St. Louis, MO 63108

For direction, visit fetalcare.org/directions.

Additional Numbers

Fetal Care Center Nurse Coordinator: 314.747.6539
Fetal Care Center Fax: 314.362.1860
Maternal-Fetal Medicine / OB / Ultrasound: 314.454.8181
Maternal-Fetal Transport: 855.747.5300
Women's Assessment Center: 314.362.5158

fetalcare.org

